

Appendix 3: Lancashire Key Species Search Results and Definition

'Lancashire Key Species' (LKS) is used by LERN as a collective term to refer to species which have a recognised status, either nationally or locally.

Specifically, it includes species identified in one or more of the following sources:

The Conservation of Habitats and Species Regulations 2010 (usually referred to as the 2010 Habitats Regulations) implement Council Directive 92/43/EEC on the conservation of natural habitats and of wild fauna and flora (the Habitats Directive) into national legislation. Articles 12 and 13 of the Habitats Directive contains a range of prohibitions seeking to protect species listed on Annex IV (animal and plant species in need of strict protection).

European Protected Species are animals and plants that receive protection under The Conservation of Habitats and Species Regulations 2010.

LKS includes species listed on Annexes II, IV and V of the Habitats Directive. These species, together with the birds protected under the Birds Directive, are called species of 'Community interest'.

The Wildlife and Countryside Act 1981 (as amended) (WCA) implements parts of the Birds Directive 2009 [2] and the Berne Convention (1979) [3] into national legislation. It includes a number of Schedules which are reviewed (usually every five years) on which details of the protected species, and their level of protection, are shown. A detailed summary of the relevant sections of the Wildlife and Countryside Act, along with the protection afforded under them can be found within Paragraphs 118-122 of [ODPM Circular 06/2005](#).

Species listed on Schedules 1, 5 and 8 are included on the list of LKS: Schedule 1 refers to Birds and their young, for which it is an offence to intentionally or recklessly disturb at, on or near an 'active' nest. Schedules 5 and 8 refer to protected species of wild animals and plants.

The Natural Environment and Rural Communities (NERC) Act 2006 - Habitats and Species of Principal Importance in England

The England Biodiversity List has been developed to meet the requirements of Section 41 of the Natural Environment and Rural Communities Act (2006). This legislation requires the Secretary of State to publish a list of species of flora and fauna and habitats considered to be of principal importance for the purpose of conserving biodiversity.

The S41 list will be used to guide decision-makers such as public bodies, including local and regional authorities, in implementing their duty under section 40 of the Natural Environment and Rural Communities Act 2006 "to have regard" to the conservation of biodiversity in England, when carrying out their normal functions. In particular:

- Regional Planning Bodies and Local Planning Authorities will use it to identify the species and habitats that should be afforded priority when applying the requirements of Planning Policy Statement 9 (PPS9) to maintain, restore and enhance species and habitats.

- Local Planning Authorities will use it to identify the species and habitats that require specific consideration in dealing with planning and development control, recognising that under PPS the aim of planning decisions should be to avoid harm to all biodiversity.
- All Public Bodies will use it to identify species or habitats that should be given priority when implementing the NERC Section 40 duty.

The Protection of Badgers Act 1992

The legislation affording protection to badgers is primarily concerned with animal welfare and the need to protect badgers from activities such as baiting and deliberate harm. The Protection of Badgers Act 1992 makes it an offence to:

- Wilfully kill, injure, take, possess or cruelly ill-treat a badger, or attempt to do so;
- To intentionally or recklessly interfere with a sett (this includes disturbing badgers whilst they are occupying a sett, as well as damaging or destroying a sett or obstructing access to it.

Lancashire BAP Species and Lancashire BAP Long List Species

Lancashire BAP Species are those for which a Lancashire BAP Action Plan has been prepared. Lancashire BAP Long Lists contain those species which occur in Lancashire and are of significance according to the criteria listed on http://www.lancspartners.org/lbap/bap_longlist.asp.

The criteria and lists have been produced by the Lancashire BAP Technical Working Group based on current available information (January 2010) and will be subject to review as new information becomes available.

The list comprises species of biodiversity significance in Lancashire and includes a number of species for which there is a published [Species Action Plan](#) (SAP). However, it is not the intention to produce SAPs for each of the species as many will be covered in general terms by HAPs. The list indicates species over which particular consideration is needed whether through Development Control, land management or agri-environment schemes.

It is intended that species action will be delivered through associated habitat action and as such the Technical Working Group will consider preparation of new SAPs on a needs basis. For those species groups for which Long Lists have yet to be prepared or published, Key Species include species identified within the BHS selection guidelines where these are also listed in the relevant British RDB, are Nationally Scarce or occur at three or fewer localities in Lancashire.

Invasive Non-Native Species

Species listed in Appendix A

Further Information

Lancashire BAP website: <http://www.lancspartners.org/lbap/>

A spreadsheet of UK species designations is maintained by JNCC: <http://jncc.defra.gov.uk/page-5331>

Protected Species and the Planning System – relevant Legislation and Policy.

<http://www.naturalengland.org.uk/ourwork/planningdevelopment/spatialplanning/standingadvice/legislation.aspx>

Table 3. Summary of Lancashire Key Species Identified in the Desk-top Assessment*N.B. Full details of the records appear in the spreadsheet accompanying this report.*

Taxon Name	Common Name	Taxon Group	Latest Record	Status Summary	Count of Records
<i>Alauda arvensis</i>	Skylark	bird	2013	European Legislation	2
<i>Alcedo atthis</i>	Kingfisher	bird	1998	European Legislation	1
<i>Alisma lanceolatum</i>	Narrow-leaved Water-plantain	flowering plant	2007	Lancashire Importance	1
<i>Anguilla anguilla</i>	European Eel	bony fish (Actinopterygii)	2011	European Legislation	1
<i>Anthus pratensis</i>	Meadow Pipit	bird	2014	European Legislation	14
<i>Apamea remissa</i>	Dusky Brocade	insect - moth	2001	UK Legislation	1
<i>Bufo bufo</i>	Common Toad	amphibian	1997	European Legislation	1
<i>Calopteryx splendens</i>	Banded Demoiselle	insect - dragonfly (Odonata)	2002	Lancashire Importance	1
<i>Chiasmia clathrata</i>	Latticed Heath	insect - moth	2003	UK Legislation	1
Chiroptera	Bats	terrestrial mammal	2013	European Legislation	49
<i>Cottus gobio</i>	Bullhead	bony fish (Actinopterygii)	2011	European Legislation	2
<i>Crambe maritima</i>	Sea-kale	flowering plant	2007	Lancashire Importance	1
<i>Crassula helmsii</i>	New Zealand	flowering plant	2007	Invasive Non	1

Taxon Name	Common Name	Taxon Group	Latest Record	Status Summary	Count of Records
	Pigmyweed			Native Species	
Diarsia rubi	Small Square-spot	insect - moth	2002	UK Legislation	1
Ecliptopera silaceata	Small Phoenix	insect - moth	2001	UK Legislation	2
Elodea canadensis	Canadian Waterweed	flowering plant	2005	Invasive Non Native Species	2
Emberiza schoeniclus	Reed Bunting	bird	2013	European Legislation	6
Falco tinnunculus	Common Kestrel	bird	2014	European Legislation	2
Fallopia japonica	Japanese Knotweed	flowering plant	2014	Invasive Non Native Species	32
Gallinago gallinago	Common Snipe	bird	2014	European Legislation	2
Haematopus ostralegus	Oystercatcher	bird	1997	European Legislation	1
Heracleum mantegazzianum	Giant Hogweed	flowering plant	2013	Invasive Non Native Species	2
Hyacinthoides non-scripta	Bluebell	flowering plant	2009	UK Legislation	14
Hydrocharis morsus-ranae	Frogbit	flowering plant	2007	Lancashire Importance	1
Impatiens glandulifera	Indian Balsam	flowering plant	2012	Invasive Non Native Species	27
Lepidium latifolium	Dittander	flowering plant	2006	Lancashire Importance	3

Taxon Name	Common Name	Taxon Group	Latest Record	Status Summary	Count of Records
<i>Lepus europaeus</i>	Brown Hare	terrestrial mammal	2013	UK Legislation	2
<i>Libellula depressa</i>	Broad-bodied Chaser	insect - dragonfly (Odonata)	2000	Lancashire Importance	7
<i>Libellula quadrimaculata</i>	Four-spotted Chaser	insect - dragonfly (Odonata)	2000	Lancashire Importance	1
<i>Locustella naevia</i>	Grasshopper Warbler	bird	2013	UK Legislation	1
<i>Mesoligia literosa</i>	Rosy Minor	insect - moth	2001	UK Legislation	2
<i>Myotis daubentonii</i>	Daubenton's Bat	terrestrial mammal	1998	European Legislation	2
<i>Myotis nattereri</i>	Natterer's Bat	terrestrial mammal	1998	European Legislation	1
<i>Numenius arquata</i>	Curlew	bird	2014	European Legislation	2
<i>Nyctalus noctula</i>	Noctule Bat	terrestrial mammal	1998	European Legislation	1
<i>Ophrys apifera</i>	Bee Orchid	flowering plant	2008	European Legislation	2
<i>Perdix perdix</i>	Grey Partridge	bird	2013	European Legislation	1
<i>Pipistrellus</i>	Pipistrelle Bat species	terrestrial mammal	2013	European Legislation	4
<i>Pipistrellus pipistrellus</i>	Common Pipistrelle	terrestrial mammal	2011	European Legislation	8

Taxon Name	Common Name	Taxon Group	Latest Record	Status Summary	Count of Records
<i>Plecotus auritus</i>	Brown Long-eared Bat	terrestrial mammal	1998	European Legislation	1
<i>Pluvialis apricaria</i>	Golden Plover	bird	1988	European Legislation	2
<i>Populus nigra</i> subsp. <i>betulifolia</i>	Black Poplar	flowering plant	2007	Lancashire Importance	6
<i>Rana temporaria</i>	Common Frog	amphibian	1997	European Legislation	1
<i>Rhododendron ponticum</i>	Rhododendron	flowering plant	2008	Invasive Non Native Species	10
<i>Salmo trutta</i>	Brown/Sea Trout	bony fish (Actinopterygii)	2011	UK Legislation	1
<i>Saxicola rubetra</i>	Whinchat	bird	2013	European Legislation	1
<i>Scotopteryx chenopodiata</i>	Shaded Broad-bar	insect - moth	2001	UK Legislation	1
<i>Sphagnum</i>	Bog Moss	moss	1990	European Legislation	4
<i>Sphagnum fallax</i>	Flat-topped Bog-moss	moss	2007	European Legislation	1
<i>Sphagnum recurvum</i>	<i>Sphagnum recurvum</i>	moss	1988	European Legislation	1
<i>Spilosoma lubricipeda</i>	White Ermine	insect - moth	2002	UK Legislation	1
<i>Spilosoma luteum</i>	Buff Ermine	insect - moth	2002	UK Legislation	1
<i>Sturnus vulgaris</i>	Common Starling	bird	2014	European	2

Taxon Name	Common Name	Taxon Group	Latest Record	Status Summary	Count of Records
				Legislation	
<i>Sympetrum danae</i>	Black Darter	insect - dragonfly (Odonata)	1999	Lancashire Importance	1
<i>Triturus cristatus</i>	Great Crested Newt	amphibian	2007	European Legislation	42
<i>Turdus philomelos</i>	Song Thrush	bird	2014	European Legislation	2
<i>Turdus pilaris</i>	Fieldfare	bird	1998	European Legislation	1
<i>Tyria jacobaeae</i>	Cinnabar	insect - moth	2003	UK Legislation	2
<i>Vanellus vanellus</i>	Lapwing	bird	2014	European Legislation	7
<i>Vipera berus</i>	Adder	reptile	2013	European Legislation	1
<i>Xanthia icteritia</i>	Sallow	insect - moth	2001	UK Legislation	1

Appendix A. Invasive Non-Native Species, 2014

Specific Name	Common Name	Group
<i>Crassula helmsii</i>	Australian swamp stonecrop	flowering plant
<i>Hydrocotyle ranunculoides</i>	Floating pennywort	flowering plant
<i>Heracleum mantegazzianum</i>	Giant Hogweed	flowering plant
<i>Impatiens glandulifera</i>	Himalyan balsam	flowering plant
<i>Impatiens capensis</i>	Orange balsam	flowering plant
<i>Azolla filiculoides</i>	Water fern	fern
<i>Myriophyllum aquaticum</i>	Parrot's feather	flowering plant
<i>Spartina anglica</i>	Common cord-grass	flowering plant
<i>Fallopia japonica</i>	Japanese knotweed	flowering plant
<i>Fallopia sachalinensis</i>	Giant knotweed	flowering plant
<i>Fallopia x bohemica</i>	Hybrid knotweed	flowering plant
<i>Ludwigia grandiflora</i>	Creeping water primrose	flowering plant
<i>Egeria densa</i>	Large-flowered waterweed	flowering plant
<i>Lysichiton americanus</i>	American skunk-cabbage	flowering plant
<i>Mimulus guttatus</i>	Monkeyflower	flowering plant
<i>Nymphoides peltata</i>	Fringed Waterlily	flowering plant
<i>Elodea canadensis</i>	Canadian pondweed	flowering plant
<i>Elodea nuttallii</i>	Nuttall's pondweed	flowering plant
<i>Lagarosiphon major</i>	Curly waterweed	flowering plant
<i>Petasites fragrans</i>	Winter heliotrope	flowering plant
<i>Petasites japonicus</i>	Giant butterbur	flowering plant
<i>Pistia stratiotes</i>	Water lettuce	flowering plant
<i>Eichhornia crassipes</i>	Water Hyacinth	flowering plant
<i>Gunnera tinctoria</i>	Giant rhubarb	flowering plant
<i>Gunnera manicata</i>	Chile rhubarb	flowering plant
<i>Cabomba caroliniana</i>	Carolina watershield	flowering plant
<i>Salvinia molesta</i>	Giant salvinia	flowering plant
<i>Undaria pinnatifida</i>	Wakame	chromist
<i>Sargassum muticum</i>	Japanese wireweed	chromist
<i>Silurus glanis</i>	Wels catfish	bony fish (Actinopterygii)
<i>Catostomus commersonii</i>	White sucker fish	bony fish (Actinopterygii)
<i>Pseudorasbora parva</i>	Topmouth gudgeon	bony fish (Actinopterygii)
<i>Leucaspis delineatus</i>	Sunbleak	bony fish (Actinopterygii)
<i>Ameiurus nebulosus</i>	Brown bullhead	bony fish (Actinopterygii)
<i>Ameiurus melas</i>	Black bullhead	bony fish (Actinopterygii)
<i>Ictalurus punctatus</i>	Channel catfish	bony fish (Actinopterygii)
<i>Rhodeus amarus</i>	Bitterling	bony fish (Actinopterygii)
<i>Micropterus dolomieu</i>	Smallmouth bass	bony fish (Actinopterygii)
<i>Micropterus salmoides</i>	Largemouth black bass	bony fish (Actinopterygii)
<i>Lepomis gibbosus</i>	Pumpkinseed	bony fish (Actinopterygii)
<i>Acipenser spp.</i>	Sterlet/Sturgeon	bony fish (Actinopterygii)
<i>Ctenopharyngodon idella</i>	Grass carp	bony fish (Actinopterygii)

Specific Name	Common Name	Group
<i>Oncorhynchus mykiss</i>	Rainbow trout	bony fish (Actinopterygii)
<i>Eriocheir sinensis</i>	Chinese mitten crab	crustacean
<i>Dikerogammarus villosus</i>	killer shrimp	crustacean
<i>Hemimysis anomala</i>	Carrion shrimp	crustacean
<i>Pacifastacus leniusculus</i>	North American signal crayfish	crustacean
<i>Astacus astacus</i>	Noble crayfish	crustacean
<i>Astacus leptodactylus</i>	Turkish crayfish	crustacean
<i>Orconectes limosus</i>	Spinycheek crayfish	crustacean
<i>Procambarus clarkii</i>	Red swamp crayfish	crustacean
<i>Dreissena (Dreissena) polymorpha</i>	Zebra mussel	Molluscs
<i>Crepidula fornicata</i>	Slipper limpet	Molluscs
<i>Crassostrea gigas</i>	Pacific oyster	Molluscs
<i>Styela clava</i>	Leathery sea squirt	tunicate (Urochordata)
<i>Didemnum vexillum</i>	Carpet sea squirt	tunicate (Urochordata)
<i>Lithobates catesbeianus</i>	American bullfrog	amphibian
<i>Xenopus laevis</i>	African clawed toad	amphibian
<i>Pelophylax ridibundus</i>	Marsh frog	amphibian
<i>Alytes obstetricans</i>	Midwife toad	amphibian
<i>Neovison vison</i>	American mink	terrestrial mammal
<i>Oxyura jamaicensis</i>	Ruddy duck	Bird
<i>Trachemys scripta</i>	Red-eared terrapin	reptile
<i>Chaetogammarus ischnus</i>	ponto-caspian species	crustacean
<i>Chaetogammarus warpachowskyi</i>	ponto-caspian species	crustacean
<i>Chelicorophium curvispinum</i>	ponto-caspian species	crustacean
<i>Chelicorophium robustum</i>	ponto-caspian species	crustacean
<i>Dikerogammarus bispinosus</i>	ponto-caspian species	crustacean
<i>Dikerogammarus haemobaphes</i>	ponto-caspian species	crustacean
<i>Echinogammarus trichiatus</i>	ponto-caspian species	crustacean
<i>Jaera istri</i>	ponto-caspian species	crustacean
<i>Obesogammarus obesus</i>	ponto-caspian species	crustacean
<i>Pontogammarus robustoides</i>	ponto-caspian species	crustacean
<i>Cercopagis pengoi</i>	Cladocera	crustacean
<i>Corophium sowinsky</i>	Amphipoda	crustacean
<i>Katamysis warpachowskyi</i>	Mysidacea	crustacean
<i>Limnomysis benedeni</i>	Mysidacea	crustacean
<i>Paramysis intermedia</i>	Mysidacea	crustacean
<i>Paramysis lacustris</i>	Mysidacea	crustacean
<i>Paramysis ullskyi</i>	Mysidacea	crustacean
<i>Pontogammarus crassus</i>	Amphipoda	crustacean
<i>Dreissena rostriformis bugensis</i>	Mollusca	Molluscs
<i>Neogobius melanostomus</i>	Round Goby	bony fish (Actinopterygii)
<i>Neogobius gymnotrachelus</i>	Racer Goby	bony fish (Actinopterygii)
<i>Proterorhinus marmoratus</i>	Tubenose Goby	bony fish (Actinopterygii)


Specific Name	Common Name	Group
American mink	Neovison vison	
Hypania invalida	ponto-caspian species	
Orconectes virilis	Virile crayfish	
Carassius auratus	Goldfish	
Cyprinus carpio	Common carp	
Urosalpinx cinerea	American oyster drill	
Ficopomatus enigmaticus	Marine tubeworm	
Rhododendron ponticum	Rhododendron	
Ludwigia palustris x repens	Hybrid primrose	


Appendix 4 Using LERN interactive PDFs

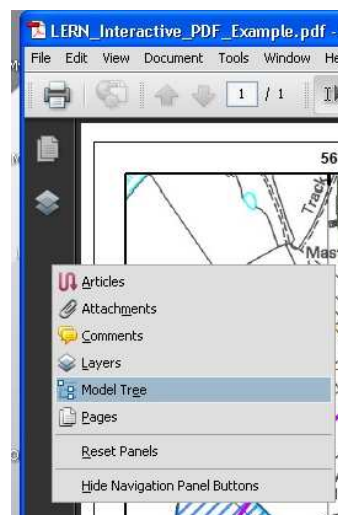
Guidance for users of LERN interactive PDFs

As all or part of our response to requests for environmental information we have provided species information in the form of an interactive PDF. This guide provides an introduction to viewing the PDF using Adobe Reader (this guide was prepared using v9). We cannot provide guidance on using any other PDF viewing software.

1. Open the supplied PDF document.

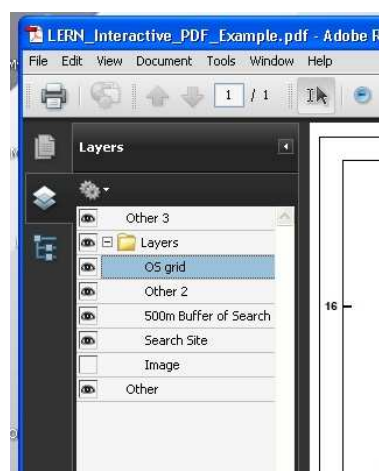
2. When an interactive PDF is opened the Layers tab  should automatically appear in the Navigation Bar (down the left hand side of the Adobe Reader window).

3. You also need to open the Model Tree tab . This can be found by right clicking the Navigation Bar. Model Tree is available in versions of Acrobat or Adobe Reader from 7.0.7.

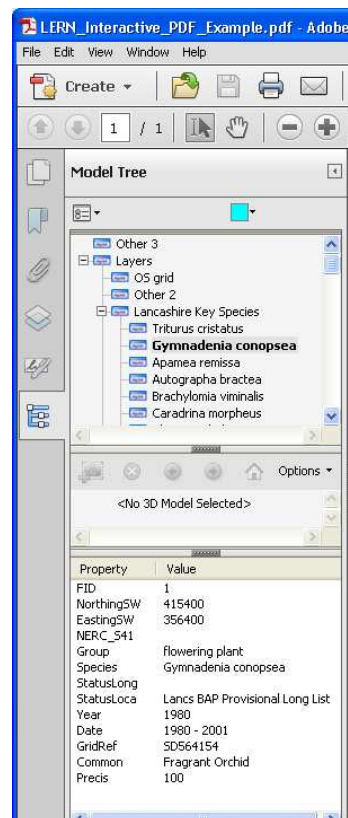


4. Map Layers can be turned off and on by expanding the folders in the Layers tab and clicking the eye symbols on and off:

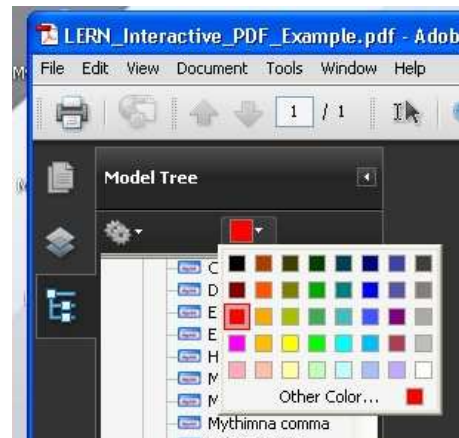
N.B. Where there is more than one map in a document then each map has its own set of layer controls. The controls for the map on the page being viewed are highlighted in **bold** text.



- The information in the Model Tree can be similarly expanded to show the record species name. Selecting a record species name in the upper section of the Model Tree tab will highlight the location on the map, and show other details of the record in the lowest section.



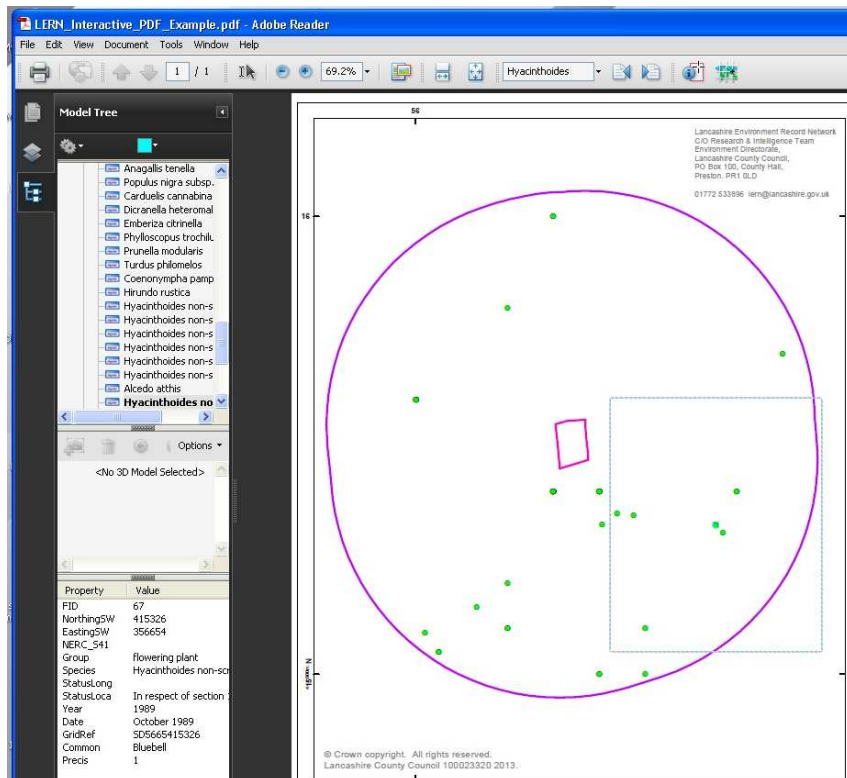
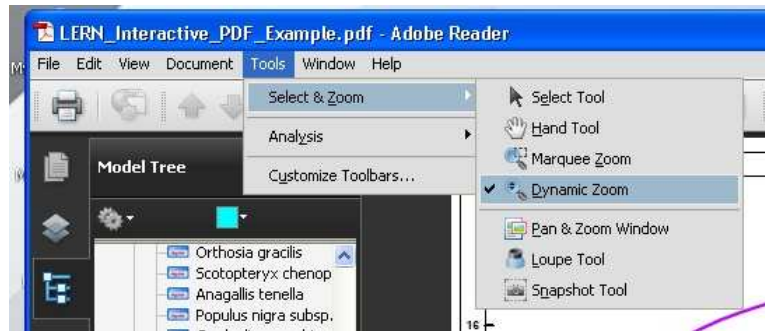
- To make the selected objects easier to spot on the map you can turn off the background mapping layer. You can also change the selected object colour to make it stand out more on the map by selecting the Color symbol on the Model Tree:

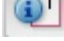



- Searching (keyboard shortcut 'Ctrl F') on all or part of a species name will highlight the location on the map and show the record details in the Model Tree tab. You can use the Find Next button to move through all of the records for that species name.



8. Turning on Dynamic Zoom (Tools > Select & Zoom > Dynamic Zoom) shows a larger blue rectangle around the selected item making them easier to spot.



9. The Object Data Tool  can be used to select objects (record locations) in the view. A selected record is surrounded by a coloured box: . In Acrobat Reader version XI the Object Data tool is found by navigating to Edit > Analysis > Object Data Tool.
- N.B. Where a record location represents a single record it will be selected and its details will be shown in the Model Tree tab. Where the map symbol represents more than one record then all the symbols on the map will be selected and no record details will be displayed in the Model Tree tab.**
- The file export process appears to include details of some records lying beyond the map extent, if you cannot see the selected object, zoom out to be able to see beyond the page extent.**

Further guidance on using these aspects of Acrobat and Adobe Reader is available on-line.

Please send any feedback on this document or the accompanying PDF to lern@lancashire.gov