

## Appendix 2

### **Business Demography 2011**

Contents:

Business Births

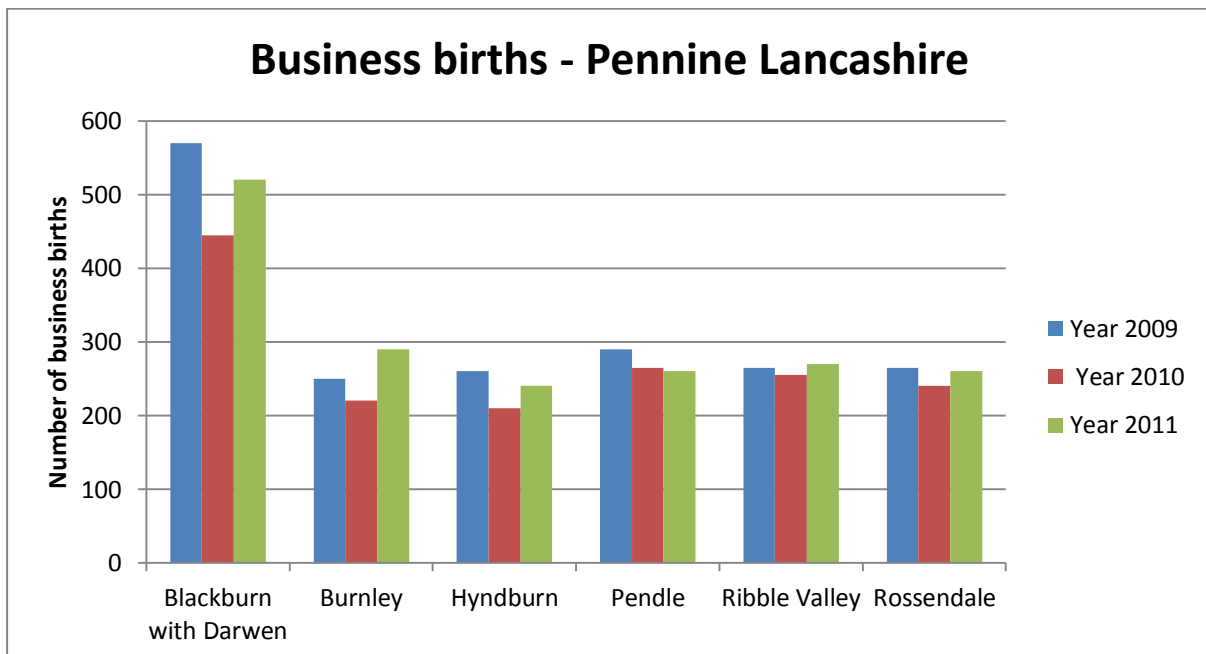
Business Deaths

Net Loss/Gain

Births of new enterprises per 10,000 resident pop (16+)

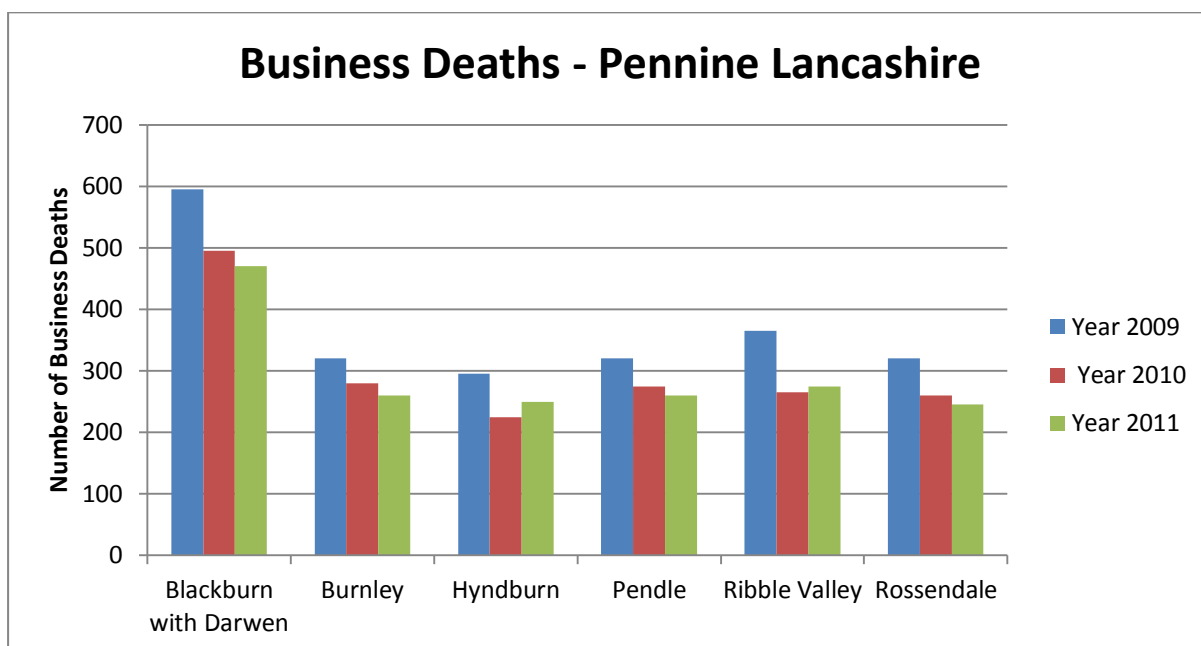
#### Business Births

	<b>Blackburn with Darwen</b>	<b>Burnley</b>	<b>Hyndburn</b>	<b>Pendle</b>	<b>Ribble Valley</b>	<b>Rossendale</b>
Year 2009	570	250	260	290	265	265
Year 2010	445	220	210	265	255	240
Year 2011	520	290	240	260	270	260



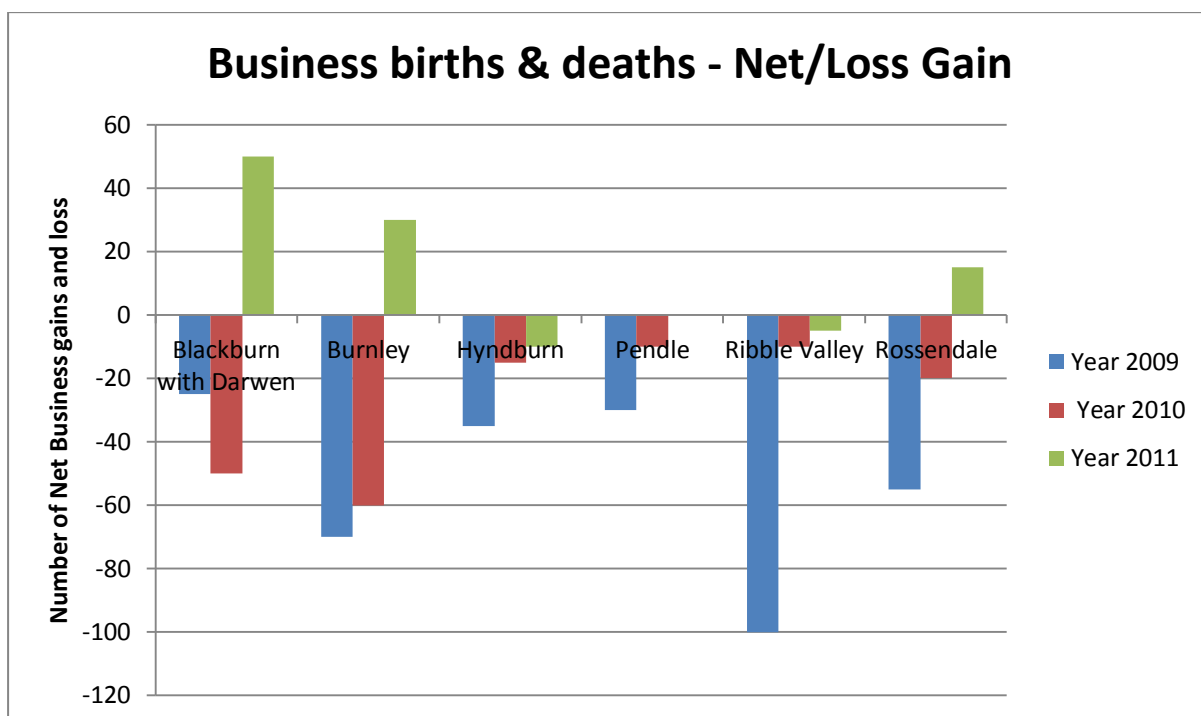
**Business Deaths**

	<b>Blackburn with Darwen</b>	<b>Burnley</b>	<b>Hyndburn</b>	<b>Pendle</b>	<b>Ribble Valley</b>	<b>Rossendale</b>
Year 2009	595	320	295	320	365	320
Year 2010	495	280	225	275	265	260
Year 2011	470	260	250	260	275	245



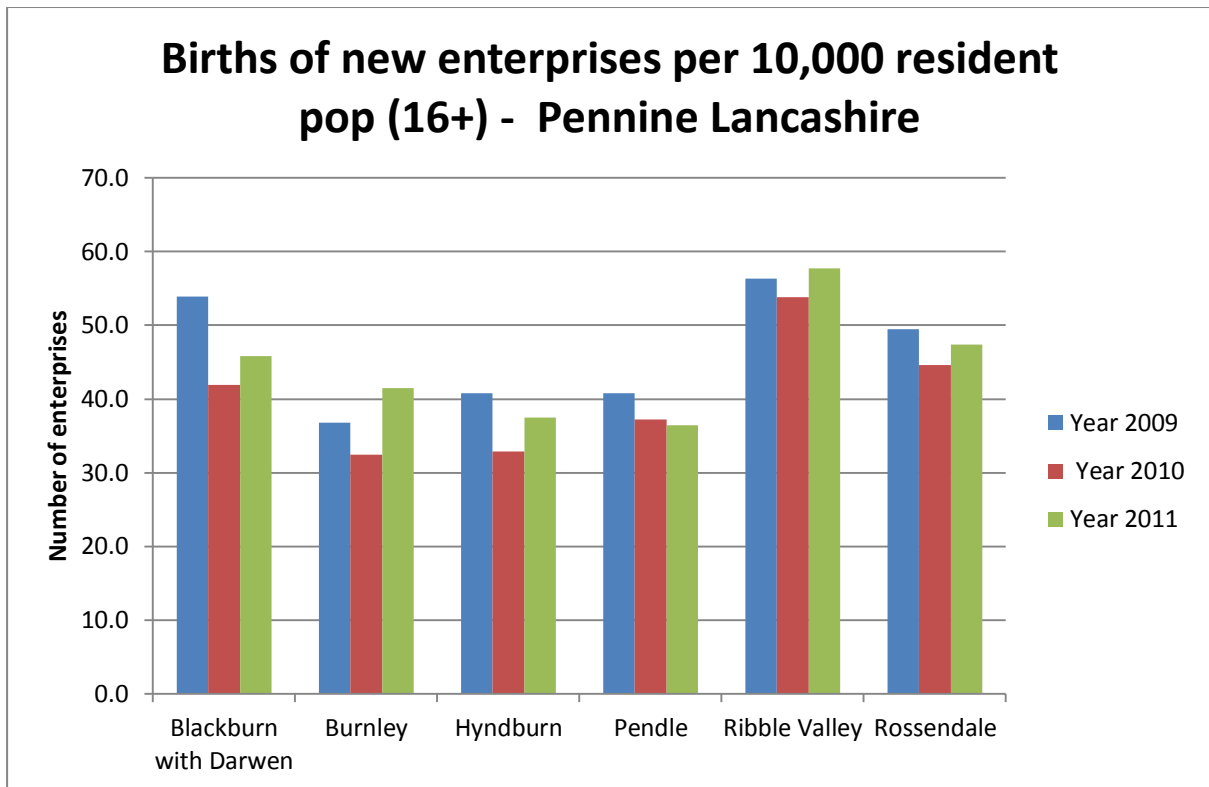
**Net Loss/Gain  
(Business births & deaths)**

	<b>Blackburn with Darwen</b>	<b>Burnley</b>	<b>Hyndburn</b>	<b>Pendle</b>	<b>Ribble Valley</b>	<b>Rossendale</b>
Year 2009	-25	-70	-35	-30	-100	-55
Year 2010	-50	-60	-15	-10	-10	-20
Year 2011	50	30	-10	0	-5	15



**Births of new enterprises  
per 10,000 resident pop  
(16+)**

	<b>Blackburn with Darwen</b>	<b>Burnley</b>	<b>Hyndburn</b>	<b>Pendle</b>	<b>Ribble Valley</b>	<b>Rossendale</b>
Year 2009	53.9	36.8	40.8	40.8	56.4	49.4
Year 2010	41.9	32.4	32.9	37.2	53.8	44.6
Year 2011	45.9	41.5	37.5	36.5	57.7	47.4



Source: [ONS Business Demography 2011](http://www.ons.gov.uk/ons/rel/bus-register/business-demography/2011/stb-business-demography-2011.html)

<http://www.ons.gov.uk/ons/rel/bus-register/business-demography/2011/stb-business-demography-2011.html>